

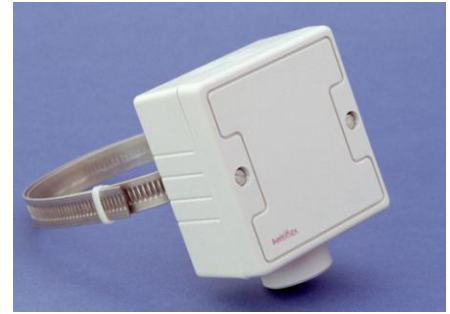
DESCRIPTION

The CTN0120 temperature sensor is designed to measure temperature conditions on the surface of liquid flow lines.

The sensor body is IP65 rated made from Flame Retardant Polycarbonate. The sensor element is enclosed in a brass contact stud which is clamped to the surface of the pipe work in a position to measure the controlled condition.

It is important that the CTN0120 is positioned on a clean surface of the pipe or cylinder to ensure a good contact for temperature measurement. Heat transfer paste will also improve the sensitivity of the measurement.

For chilled water applications the CTN3060 sensor element and terminal board is epoxy sealed to prevent the influence of condensation in low temperature conditions.



FEATURES

- IP65 housing
- Flame Retardant Polycarbonate Body
- Plated steel band and adjustable screw
- Optional encapsulated sensor for chilled water applications

SPECIFICATION

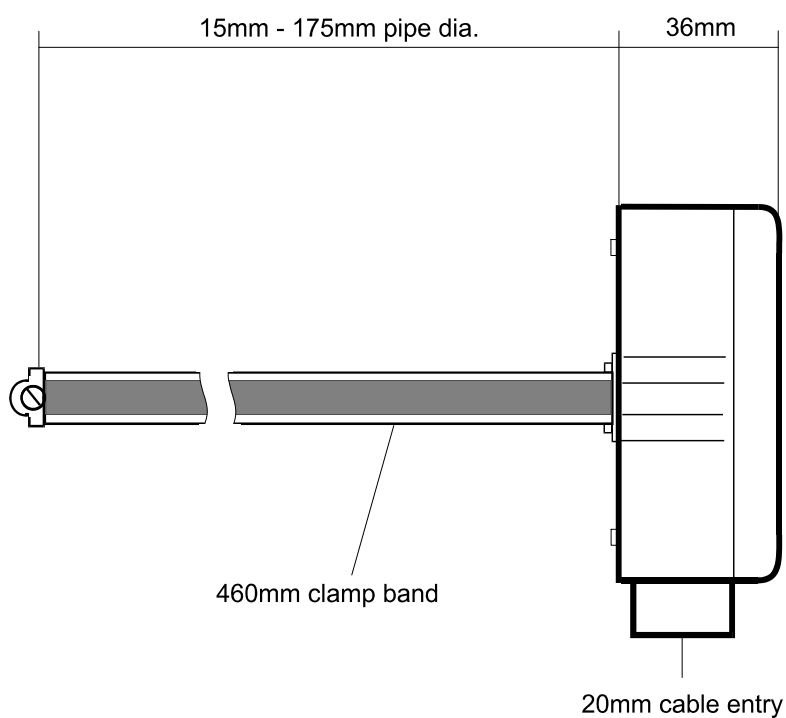
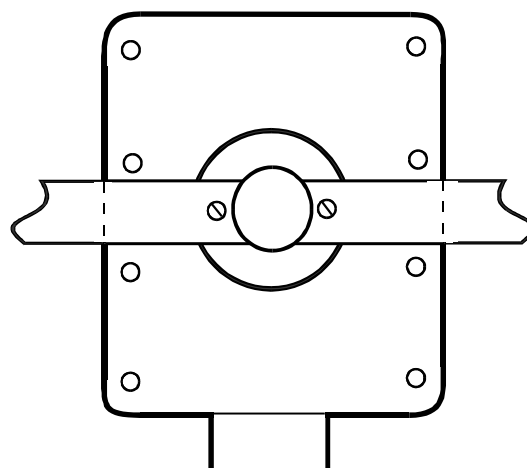
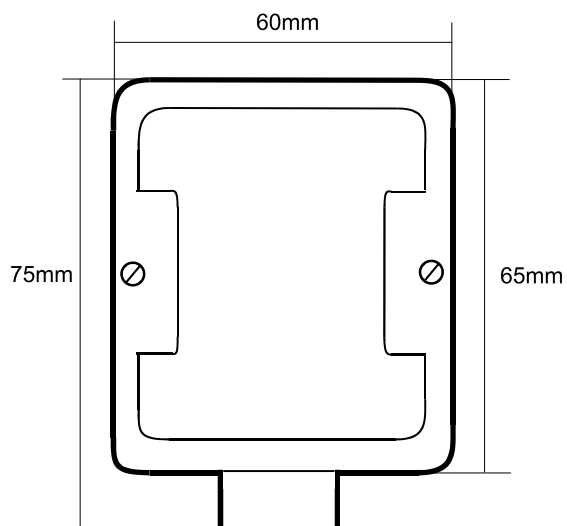
Material Body:	Flame Retardant Polycarbonate
Contact Stud:	Brass
Clamp Band:	Plated Steel
Sensing Elements:	CTN0120: 10K3 NTC Thermistor
	CTN3060: 2.2K3C NTC Thermistor
Accuracy:	+0.2°C @ 70°C Thermistor
Operating Temperature:	0 to + 120°C
Terminals:	1.0mm recommended 2.5mm max
Location:	Positioned to measure the controlled condition
Order Code:	CTN0120 CTN3060 for chilled water

Ambiflex Ltd
12 Attenbury's Park Estate
Attenbury's Lane
Timperley, Cheshire
WA14 5QE
Tel: 0161 973 4411
Fax: 0161 973 3770

AMBIFLEX DATA SHEET: PAGE 1 of 2

CTN0120 Clamp On Sensor

CTN3060 Clamp On Sensor



Ambiflex Ltd
 12 Attenbury's Park Estate
 Attenbury's Lane
 Timperley, Cheshire
 WA14 5QE
 Tel: 0161 973 4411
 Fax: 0161 973 3770

AMBIFLEX DATA SHEET: PAGE 2

CTN0120 Clamp On Sensor

CTN3060 Clamp On Sensor